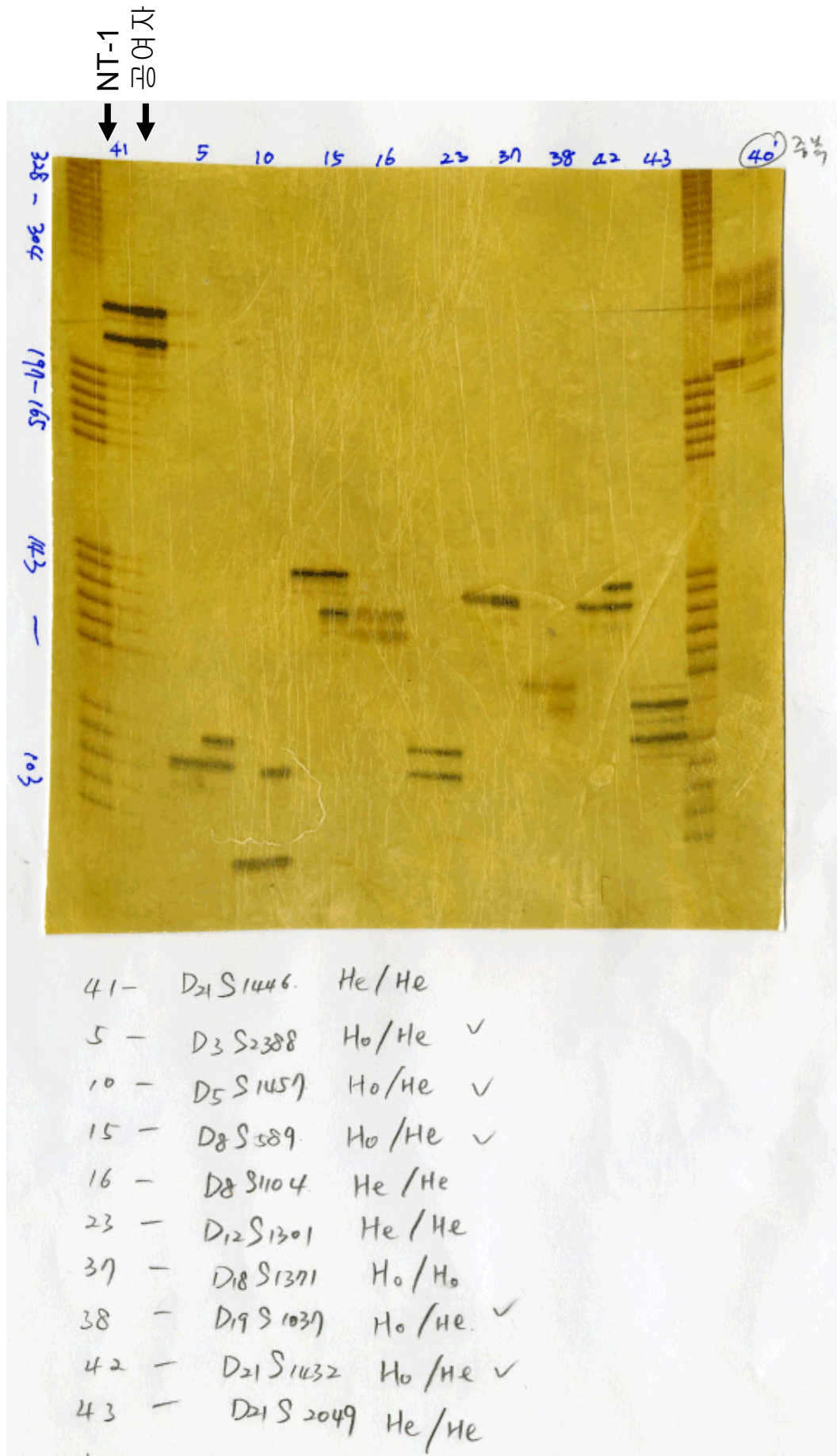
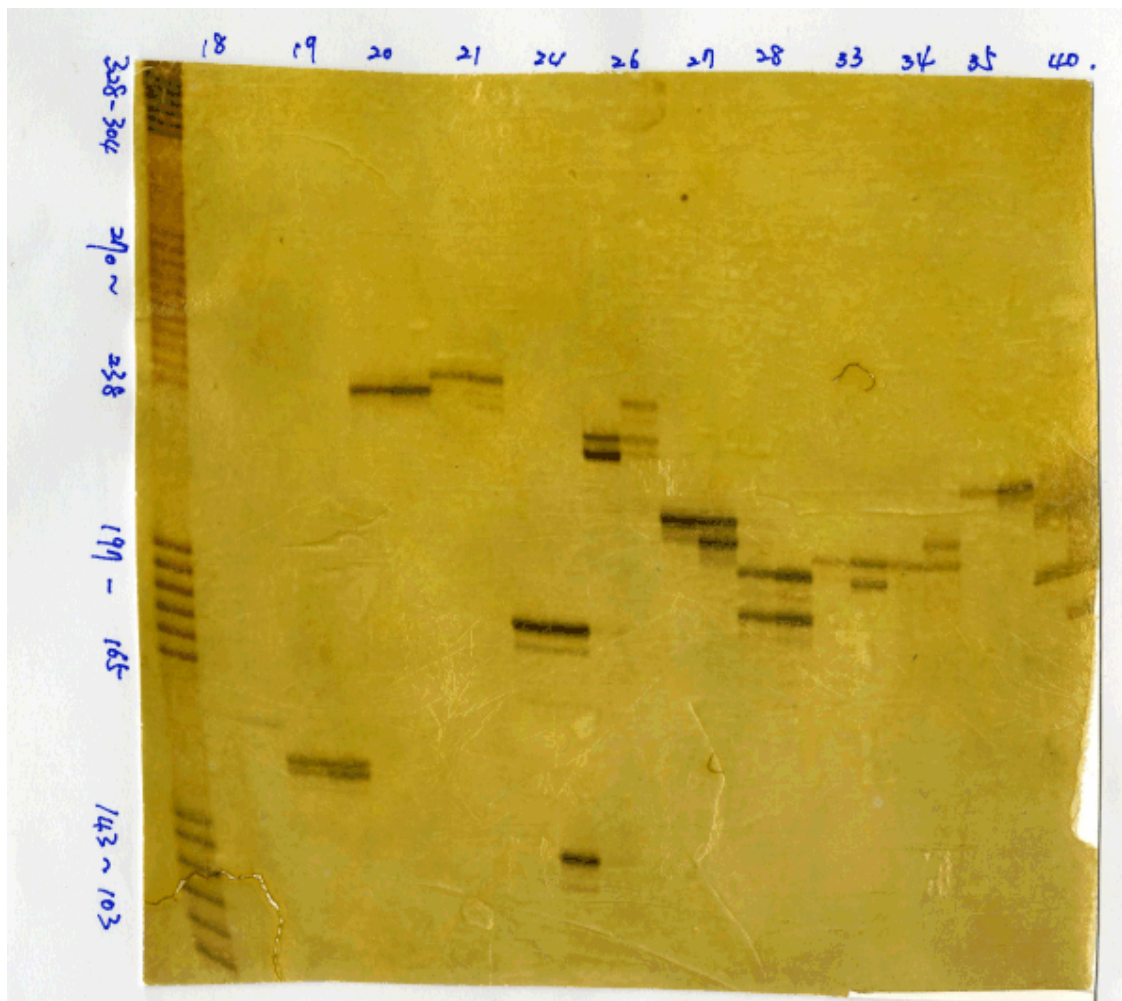
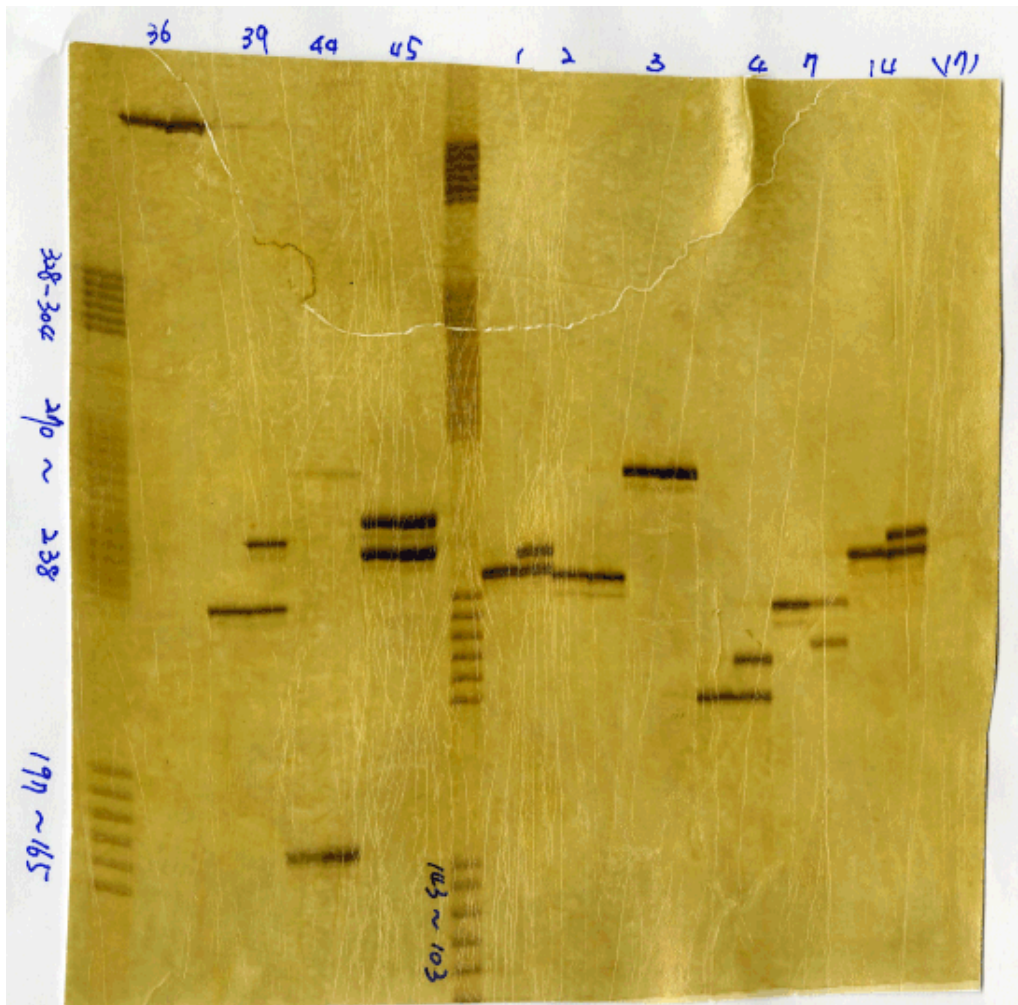


DNA 지문 분석 결과





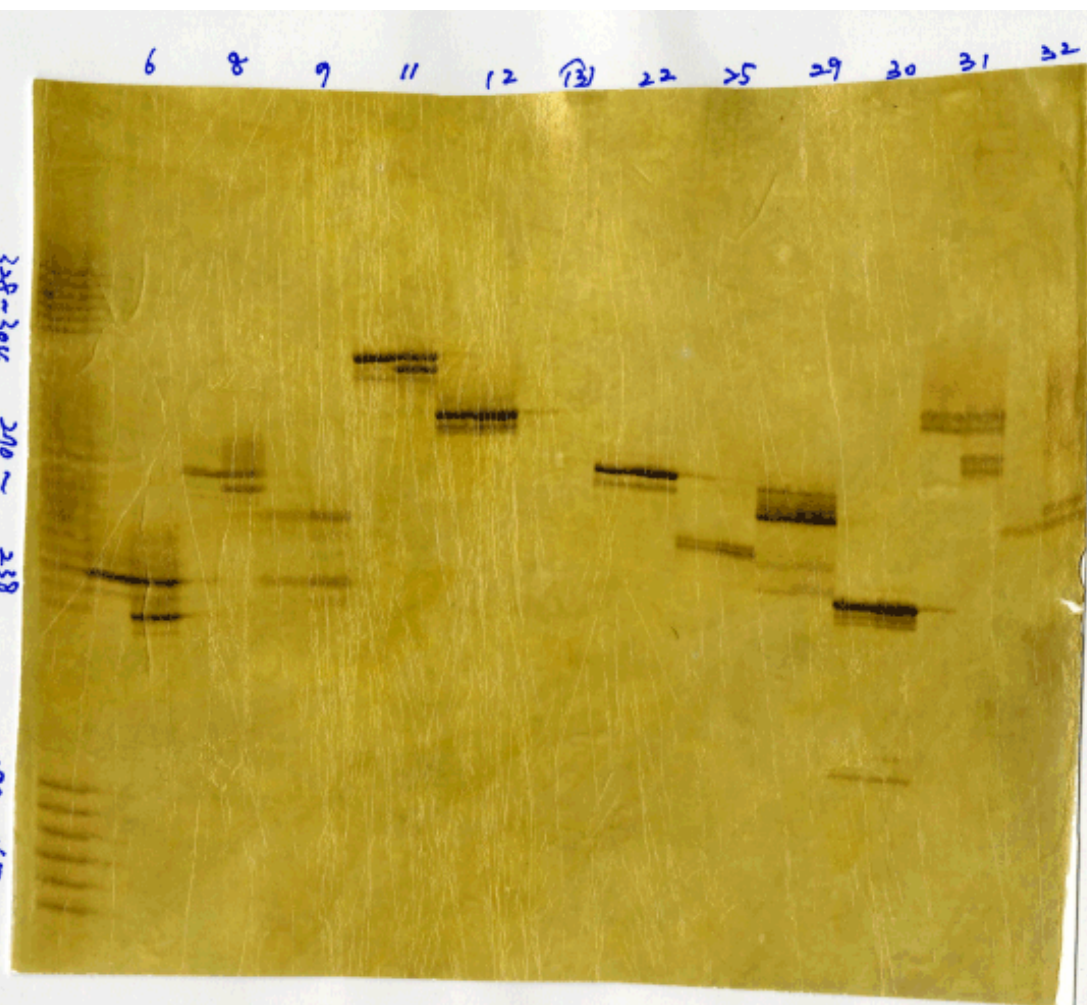
18 - D9S1118 Ho/Ho
 19 - D10S1217 Ho/Ho <GGAA>
 20 - D10S1220 Ho/Ho
 21 - D11S1483 Ho/Ho
 24 - D12S1292 Ho/He ✓
 26 - D13S1493 Ho/He ✓
 27 - D14S608 Ho/He ✓
 28 - ~~D15S609~~ He/He ← D15S659
 33 - D18S1376 Ho/He ✓
 34 - D18S866 Ho/He ✓
 35 - D18S847 Ho/Ho
 40 - D20S484 Ho/He ✓



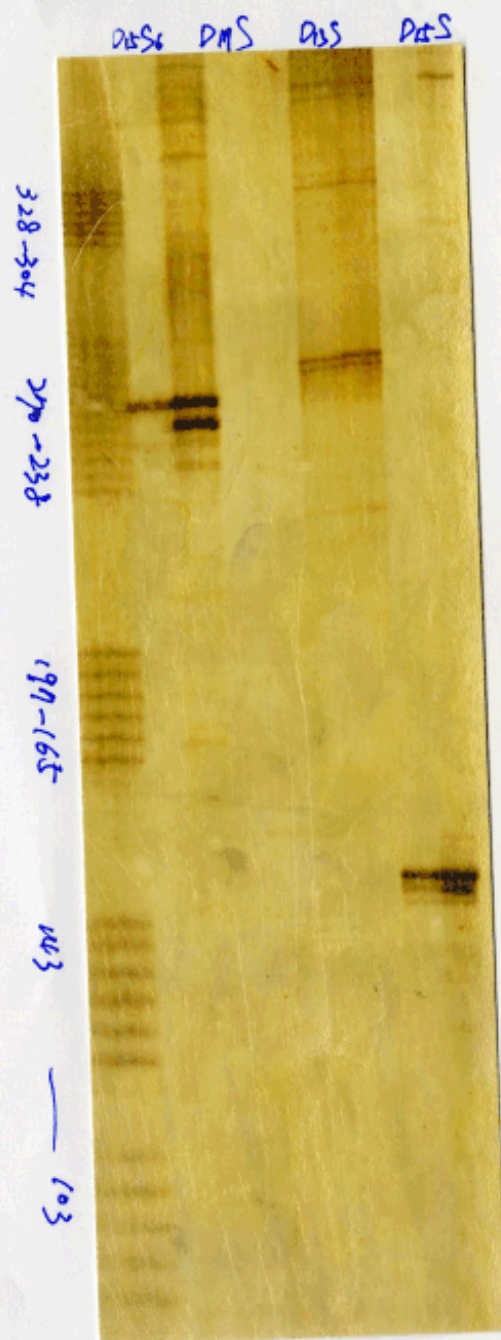
36 -	D ₁₈ S 815	H ₀ /H ₀	
39 -	D ₂₀ S 486	H ₀ /He	✓
44 -	D ₂₂ S 486	H ₀ /H ₀	
45 -	D ₂₂ S 691	He/He	
1 -	D ₁ S 534	H ₀ /He	✓
2 -	D ₁ S 3466	H ₀ /H ₀	
3 -	G 10307 (2)	H ₀ /H ₀	
4 -	D ₂ S 436	H ₀ /He	✓
7 -	D ₄ S 1627	H ₀ /He	✓
14 -	D ₇ S 1830	H ₀ /He	✓
(17) -	D ₉ S 301	—	

328-304
290-
238

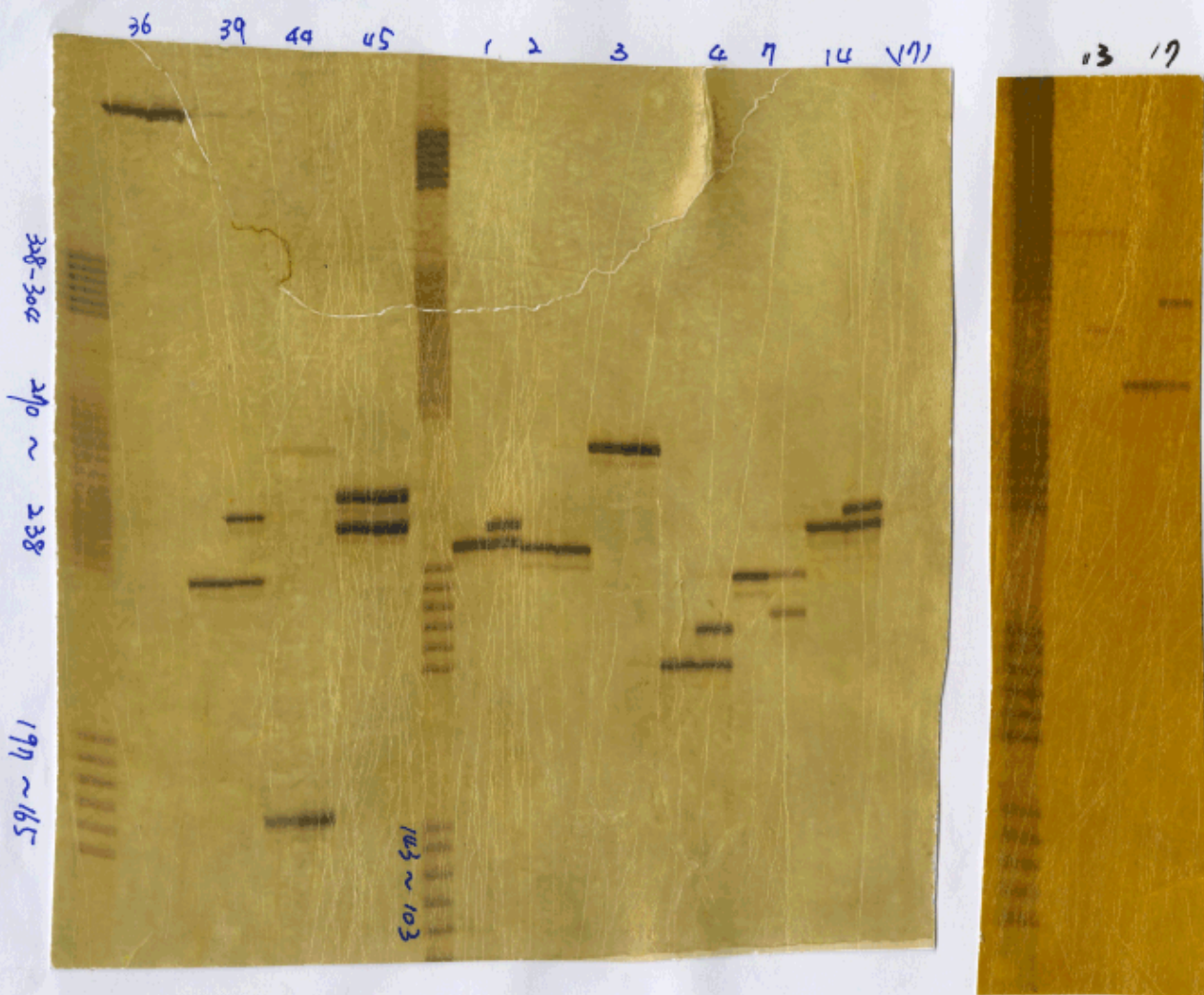
199-165



- 6 - D₃S₂₄₆₂ H₀/He ✓
- 8 - D₄S₂₆₃₈ H₀/He ✓
- 9 - D₅S₁₇₁₅ He/He
- 11 - D₆S₁₀₅₃ H₀/He ✓
- 12 - D₆S₁₉₆₀ H₀/H₀
- 13 - D₇S₂₂₀₄ _____
- 22 - D₁₁S₁₉₇₈ H₀/H₀
- 25 - D₁₃S₁₇₈₇ H₀/H₀
- 29 - D₁₆S₁₅₃ H₀/H₀
- 30 - D₁₆S₅₄₀ H₀/H₀
- 31 - D₁₇S₁₂₉₃ H₀/He ✓
- 32 - D₁₇S₁₂₉₄ H₀/He ✓



Dis646	21 Mb	H ₀ /He	He/0.64	(256 - 204)
Dis2496	17 Mb		He/0.81	(163 - 139)
Dis1316	17 Mb	H ₀ /H ₀	He/ 0.45 0.45	(265 - 221)
Dis817	22 ~	H ₀ /H ₀	He/0.29	(1702 - 144)



- 36 - D₁₈S815 H₀/H₀
 39 - D₂₀S486 H₀/He ✓
 44 - D₂₂S186 H₀/H₀
 45 - D₂₂S691 He/He
 1 - D₁S534 H₀/He ✓
 2 - D₁S3466 H₀/H₀
 3 - G₁₀₃₀₇ (62) H₀/H₀
 4 - D₂S436 H₀/He ✓
 7 - D₄S1627 H₀/He ✓
 14 - D₇S1830 H₀/He ✓
 (17) - D₉S301 H₀/He ✓

- 13 - D₇S2204 H₀/He
 17 - D₉S301 H₀/He