

팬데믹은 디지털 지각 변동

차상균

서울대학교
데이터사이언스 대학원

2020. 6. 24



SEOUL
NATIONAL
UNIVERSITY

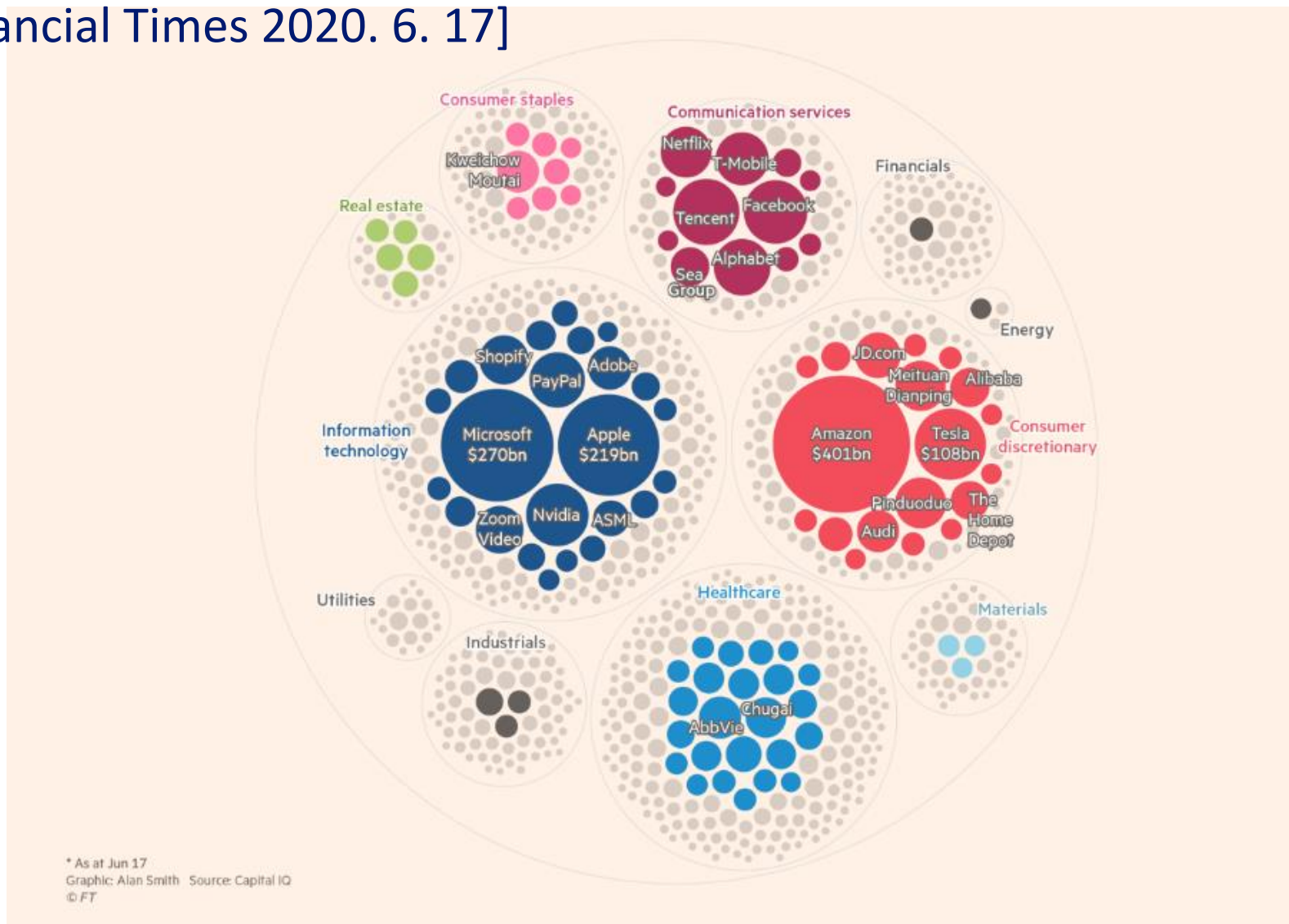
SNU
responds to
COVID-19

This material is the intellectual property of Seoul National University. So it is solely for the use of Seoul National University. No part of it may be circulated, quoted, or reproduced for distribution without prior written approval from Seoul National University. © 2020 Seoul National University. All rights reserved.

Fast Movers of Pandemic World



- Top 25 Growth Companies in 2020 by Market Value [Financial Times 2020. 6. 17]



Fast Movers of Pandemic *'Digital World'*



SEOUL
NATIONAL
UNIVERSITY

SNU
responds to
COVID-19

- Who are Grabbing the Opportunities of Digital Surge by Pandemic?
- based on Data Science Foundation: Secure Cloud Computing, Big Data, AI
 - Amazon
 - Proved crucial role in e-commerce, logistics, and cloud computing
 - 26% increase, 33% increase in AWS cloud sales in 1Q sales
 - Hired 175K staff, and leased 12 new cargo aircraft (82 total)
 - Microsoft
 - MS Teams: Secure Collabo Workspace Tool on Azure Cloud
 - Video Conf, Chats, Calendar
 - MS docs and E-mails
 - Workday Expense Handling Apps
 - Successful Transformation to Cloud Company
 - Zoom



Chief Architect of Teams
Dr. Johannes Gehrke
(Former Cornell Prof)

SNU Ambient AI Connecting Digital & Physical

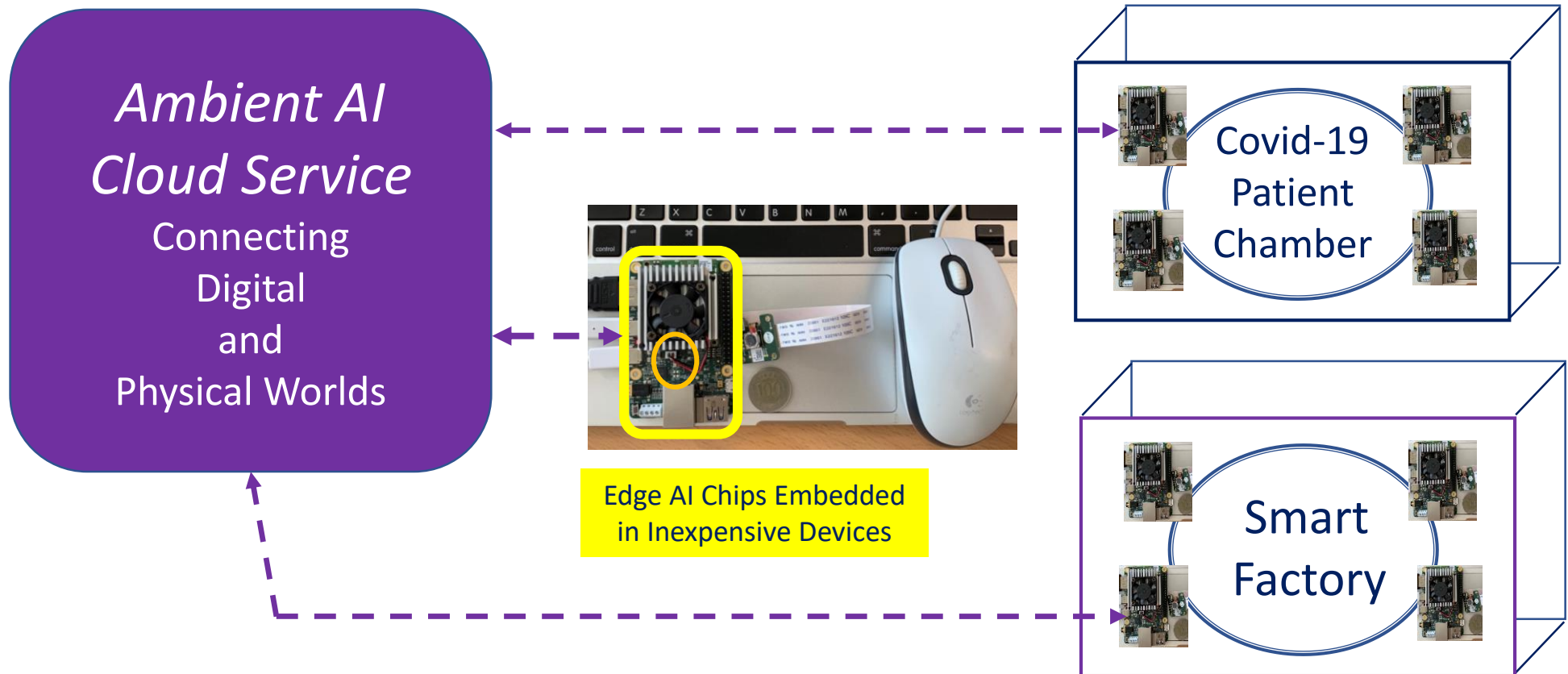


SEOUL
NATIONAL
UNIVERSITY

SNU
responds to
COVID-19

➤ SNU's New Paradigm of AI Research Connecting Digital and Physical Worlds

- Immediate Actions on Physical World with Massively Collaborative Distributed Local AI Processing on Billions of Edge Devices



SNU Ambient AI for COVID-19



SEOUL
NATIONAL
UNIVERSITY

SNU
responds to
COVID-19

➤ 서울대 데이터사이언스 대학원 2020년 1학기 Term Project

- 개인 정보 유출 없이 실시간으로 공공 장소에서 마스크 착용 통계 수집 가능



- 디지털화 선도 국가, 기업, 사회와 그렇지 않는 그룹 사이의 격차는 점점 커지게 될 것이다.
- 경제적 약자는 디지털 소외 그룹에서 나올 가능성이 높다
- 최선의 사회 복지는 국민 각자가 미래를 선도할 수 있는 역량을 가지도록 투자하는 것
- 고등 교육 패러다임의 변화 절실
- 보편적 데이터사이언스 (AI 포함) 교육 투자